

PRODUCT OVERVIEW

Discover the fascinating world of
PENTAX Medical endoscopy



PENTAX Medical innovation and responsibility

Index



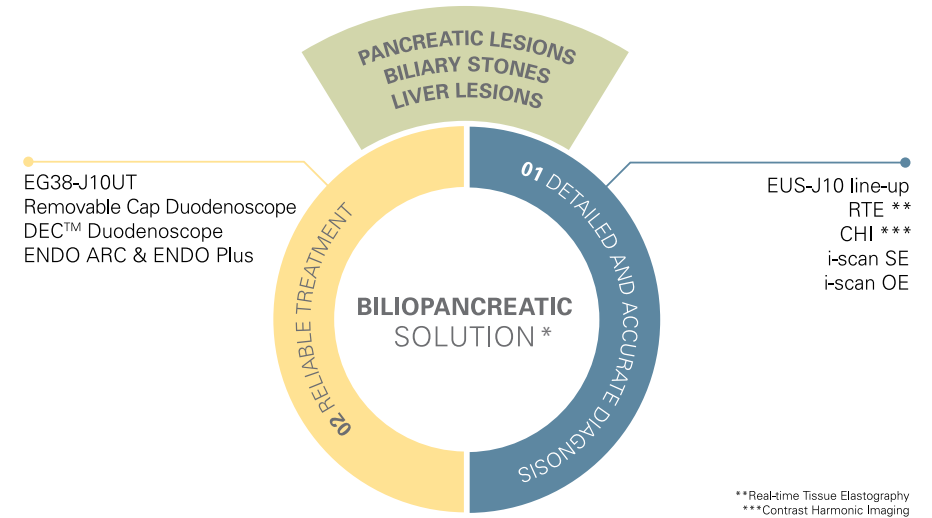
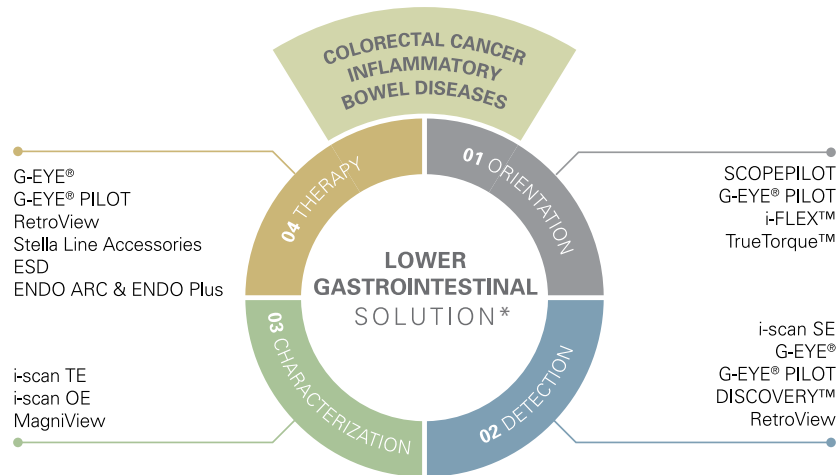
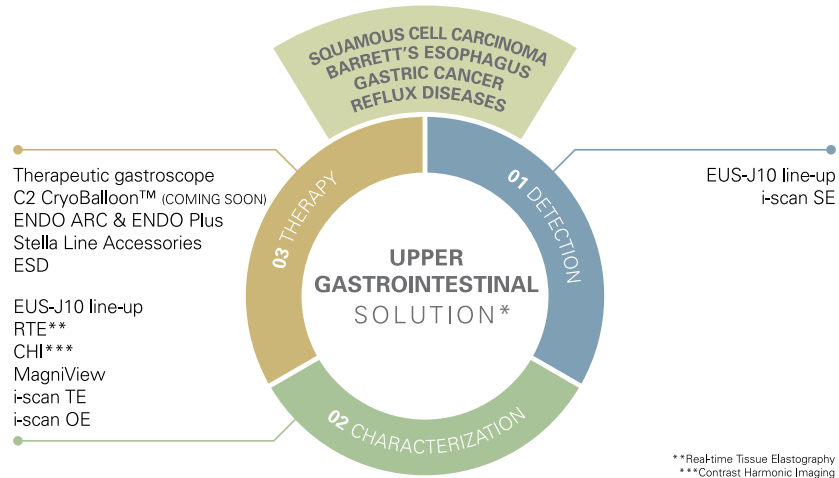
With a combination of technological innovations and medical responsibility, PENTAX Medical sets new standards for endoscopic diagnosis and therapy.

State-of-the-art medical and technological equipment of the highest quality that come with intelligent system compatibility as well as a comprehensive system program. Furthermore, an efficient endoscope drying and storage system, in addition to an efficient service program provides the highest level of investment security for endoscopists of all relevant disciplines.



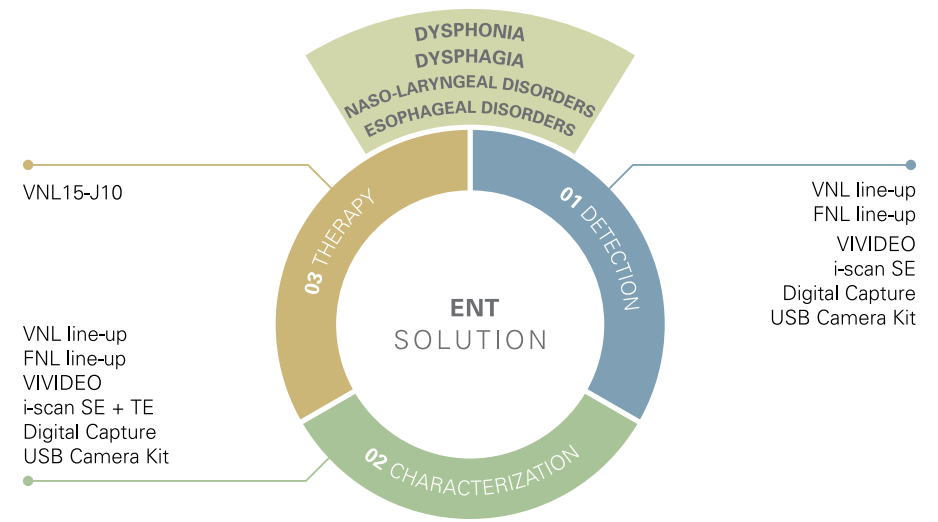
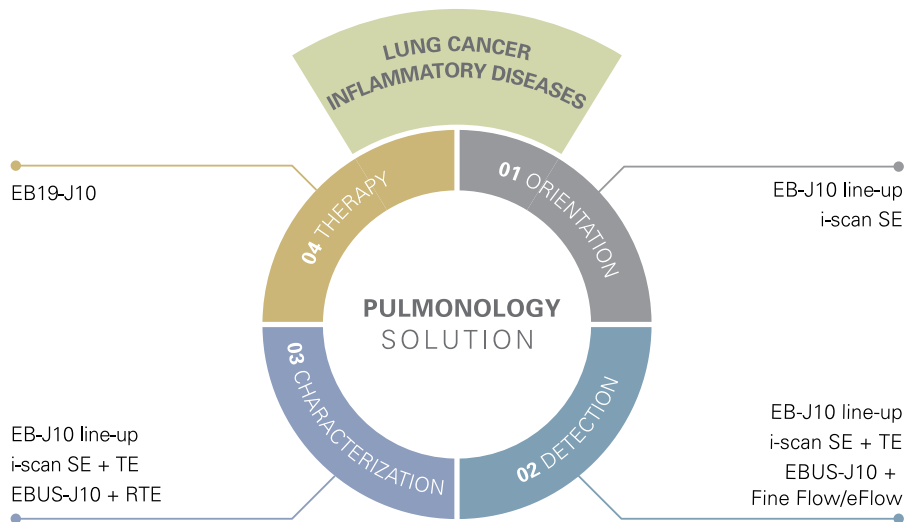
Solutions for every discipline and market	4
Upper GI and Lower GI solution:	8
Advanced diagnosis and treatment	8
Diagnostic and standard therapeutics	16
Basic diagnosis and treatment	22
Peripherals and Accessories	26
Biliopancreatic solution:	28
Advanced diagnosis and treatment	28
Diagnostic and standard therapeutics	30
Basic diagnosis and treatment	32
Peripherals and Accessories	34
Pulmonology solution:	36
Advanced diagnosis and treatment	36
Diagnostic and standard therapeutics	38
Basic diagnosis and treatment	40
Peripherals and Accessories	42
Intubation solution:	44
Advanced diagnosis and treatment	44
Basic diagnosis and treatment	46
Peripherals and Accessories	48
ENT solution:	50
Advanced diagnosis and treatment	50
Diagnostic and standard therapeutics	52
Basic diagnosis and treatment	54
Peripherals and Accessories	56
Urology solution:	58
Diagnostic and standard therapeutics	58
Basic diagnosis and treatment	60
Peripherals and Accessories	62
Endoscope Drying and Storage:	
Endoscope drying and storage	64
Product Compatibility Chart	66

Solutions for every discipline and market



* All PENTAX Medical solutions can be combined with PlasmaTYPHOON and PlasmaBAG system for a complete endoscope drying and controlled storage solution. Please refer to page 64 for solution details.

Solutions for every discipline and market



Upper GI and Lower GI



Advanced diagnosis and treatment

Upper GI Endoscopes

Product	Insertion Tube ø (mm)	Min. Instrument Channel ø (mm)	Working Length (mm)	Tip angulation up/down (°)	Tip angulation right/left (°)	Field of view (°)	Remarks
EG17-J10 Video Gastroscope	5.7	2.0	1100	210/120	120/120	140	HD, Transnasal, wide angle
EG27-i10 Video Gastroscope	9	2.8	1050	210/120	120/120	140	HD+, Close Focus, Optimal ratio outer diameter/working channel
MagniView EG-2990Zi Video Gastroscope	9.8	2.8	1050	210/120	120/120	140	HD+, Optical Zoom, MagniView, Water Jet System, Compatible with Distal Rubber Hood: OE-A58
EG29-i10 Video Gastroscope	9.8	3.2	1050	210/120	120/120	140	HD+, Close Focus, Wide Therapeutic Option, Optimal ratio outer diameter/working channel, Water Jet System
EG34-i10 Video Gastroscope	11.6	3.8	1050	210/120	120/120	140	HD+, Close Focus, Wide Therapeutic Option, Water Jet System
EG-3890TK Video Gastroscope	12.8	3.8/2.8	1050	180/120	120/120	140	HD, Twin Channel, Water Jet System

Lower GI Endoscopes

Product	Insertion Tube ø (mm)	Min. Instrument Channel ø (mm)	Working Length (mm)	Tip angulation up/down (°)	Tip angulation right/left (°)	Field of view (°)	Remarks
RetroView EC34-i10TM Video Colonoscope EC34-i10TF Video Colonoscope EC34-i10TL Video Colonoscope	11.6	3.2	1300 1500 1700	210/180	160/160	140	HD+, Close Focus, Wide Therapeutic Option, i-FLEX and TrueTorque, Water Jet System, RetroView radius
EC34-i10M Video Colonoscope EC34-i10F Video Colonoscope EC34-i10L Video Colonoscope	11.6	3.8	1300 1500 1700	180/180	160/160	140	HD+, Close Focus, Wide Therapeutic Option, Optimal ratio outer diameter/working channel, i-FLEX and TrueTorque, Water Jet System
MagniView EC-3890MZi Video Colonoscope EC-3890FZi Video Colonoscope EC-3890LZi Video Colonoscope	13.2	3.8	1300 1500 1700	180/180	160/160	140	HD, MagniView, i-FLEX and True-Torque, Water Jet System, Distal Rubber Hood (OE-A59)
EC-3890TLK Video Colonoscope	13.2	3.8/2.8	1700	180/180	160/160	140	HD, i-FLEX and TrueTorque, Water Jet System, Twin Channel
EC38-i10M Video Colonoscope EC38-i10F Video Colonoscope EC38-i10L Video Colonoscope	13.2	3.8	1300 1500 1700	180/180	160/160	140	HD+, i-FLEX and TrueTorque, Water Jet System
EC38-i10M2 Video Colonoscope EC38-i10F2 Video Colonoscope	13.2	3.8	1300 1500	180/180	160/160	140	HD+, i-FLEX and TrueTorque, increased rigidity, Water Jet System

Upper GI and Lower GI



Advanced diagnosis and treatment | G-EYE® System

G-EYE® Endoscopes

Product	Insertion Tube ø (mm)	Min. Instrument Channel ø (mm)	Working Length (mm)	Tip angulation up/down (°)	Tip angulation right/left (°)	Field of view (°)	Remarks
G-EYE34-i10F Video Colonoscope G-EYE34-i10L Video Colonoscope	11.6	3.8	1500 1700	180/180	160/160	140	HD+, Close Focus, Wide Therapeutic Option, Optimal ratio outer diameter/working channel, i-FLEX and TrueTorque, Water Jet System, permanently integrated reusable balloon
G-EYE38-i10F Video Colonoscope G-EYE38-i10L Video Colonoscope	13.2	3.8	1500 1700	180/180	160/160	140	HD+, Close Focus, i-Flex and TrueTorque, Water Jet System, permanently integrated reusable balloon
G-EYE38-i10F2 Video Colonoscope	13.2	3.8	1500	180/180	160/160	140	HD+, i-Flex and TrueTorque, Water Jet System, permanently integrated reusable balloon, increased rigidity
G-EYE38-i10NF G-EYE PILOT Video Colonoscope G-EYE38-i10NL G-EYE PILOT Video Colonoscope	13.2	3.8	1500 1700	180/180	160/160	140	HD+, Water Jet System, Permanently integrated G-EYE® reusable balloon for increased mucosa visualization, Laser treatment, electrosurgery treatment, 3D navigation support

Inflation System

Electrical input voltage [VAC]	Electrical input frequency [Hz]	Dimensions [mm]	Set Pressure Tolerance [mbar]	Inflated Balloon Set Pressure [mbar]
NaviAid™ SPARK ² C (Compatible with G-EYE® endoscopes and NaviAid™ AB-F)				
100 - 240	50-60	280 x 195 x 90	±10	Anchoring pressure 70. Unique Controlled Withdrawal™ pressure- 3 intermediate levels

NaviAid™ AB-F (Advancing Balloon)

Catheter Length [mm]	Compatible Working Channel [mm]	Balloon Diameter [mm]	Inflated Balloon Set Pressure [mBar]	Set Pressure Tolerance [mBar]	Balloon Inflation System - Power Supply
3,500	≥ 3.7	40	60	± 10	100-240 VAC; 50-60 Hz

Upper GI and Lower GI



Advanced diagnosis and treatment | SCOPEPILOT System

SCOPEPILOT Video Colonoscope

Product	Insertion Tube ø (mm)	Min. Instrument Channel ø (mm)	Working Length (mm)	Direction of view (°)	Tip angulation up/down (°)	Tip angulation right/left (°)	Field of view (°)	Remarks
EC38-i10NF SCOPEPILOT Video Colonoscope	13.2	3.8	1500	Forward	180/180	160/160	140	HD+, Water Jet System, i-FLEX and TrueTorque, 3D navigation support
EC38-i10NL SCOPEPILOT Video Colonoscope	13.2	3.8	1700					
EC34-i10NF SCOPEPILOT	11.6	3.2	1500					
EC34-i10NL SCOPEPILOT	11.6	3.2	1700					

PENTAX Medical Navigation Control Unit NCU-7000

Item	Specifications	
Power	Voltage	100 - 230VAC
	Voltage fluctuation	±10%
	Frequency	50 - 60Hz
	Rated input	150VA
Operating Environment	Ambient temperature	10°C - 30°C
	Relative humidity	30% - 75%
	Air pressure	700 - 1,060hPa
Storage and Transportation Environment	Ambient temperature	-20°C - 60°C
	Relative humidity	10% - 85%
	Air pressure	700 - 1,060hPa
Video Signal	Digital output: DVI	Resolution of the entire monitor screen: 1920 x 1080p (1 set)
Control Signal	RCU	1 set
	Keyboard	1 set
	USB	1 set (USB 2.0 compliant) USB flash memory
Image Recording Functions	Recording media	USB flash memory *USB hard drive is not available
	Recording format	JPEG
Dimensions (NCU)	Excluding protrusions	400mm (W) x 100mm (H) x 400mm (D)
	Maximum dimensions	400mm (W) x 115mm (H) x 400mm (D)
Weight		7.4kg

Processor

EPK-i7010 OPTIVISTA plus Video Processor with i-scan and i-scan OE	
Light source	300W Xenon
Advanced modalities	Digital image enhancement (i-scan SE, CE, TE) Optical image enhancement (i-scan OE)
Digital output	HD-SDI, DVI
Analog output	RGB, VGA, Y/C, VIDEO OUT
User Interface	Touch screen
Digital Zoom	yes
Dimensions (W x H x D) / Weight	400 x 205 x 520 mm, 21,5 kg

Upper GI and Lower GI



Advanced diagnosis | Artificial Intelligence

PENTAX Medical DISCOVERY™ PENTAX Medical Smart Assistant System SAS-M10

PENTAX Medical DISCOVERY™ assists endoscopists in finding potential polyps during a colonoscopy examination

Type	SAS-M10
Display	32" LCD capacitive touch-screen
Max. resolution	3,840 × 2,160
Max. colors	10 bits (8 bits + FRC) / 1.07B colors
Pixel Pitch (mm)	0.1845 x 0.1845
Luminance (cd/m2)	350 (TYP)
Mounting/Holder	VESA 100/200 mm
Size and weight	778 × 478 × 102 mm (W × H × D); 20.6 kg
Power supply	100 – 240 V AC, 50 – 60 Hz
Degree of protection against electric shock / ingress of water	Class I / IPX0
Compatible Video Processors	EPK-i7010, EPK-i7000, EPK-i7000(A), EPK-i5500c, EPK-i5000

Upper GI and Lower GI



Diagnostic and standard therapeutics

Upper GI Endoscopes

Product	Insertion Tube ø (mm)	Min. Instrument Channel ø (mm)	Working Length (mm)	Tip angulation up/down (°)	Tip angulation right/left (°)	Field of view (°)	Remarks
EG-2490K Video Gastroscope	8	2.4	1050	210/120	120/120	140	HD
EG-2790K Video Gastroscope	9	2.8	1050	210/120	120/120	140	HD
EG-2990i Video Gastroscope	9.8	2.8	1050	210/120	120/120	140	HD+, Water Jet System

Lower GI Endoscopes

Product	Insertion Tube ø (mm)	Min. Instrument Channel ø (mm)	Working Length (mm)	Tip angulation up/down (°)	Tip angulation right/left (°)	Field of view (°)	Remarks
RetroView EC-3490TMi Video Colonoscope	11.6	3.2	1300	210/180	160/160	140	HD+, RetroView radius, i-FLEX and TrueTorque, Water Jet System
EC-3890Fi2 Video Colonoscope	13.2	3.8	1500	180/180	160/160	140	HD+, i-FLEX and TrueTorque, Water Jet System
EC-3890Fi Video Colonoscope EC-3890Li Video Colonoscope	13.2	3.8	1500 1700	180/180	160/160	140	HD+, i-FLEX and TrueTorque, Water Jet System
EC-3890TLK Video Colonoscope	13.2	3.8/2.8	1700	180/180	160/160	140	HD, i-FLEX and TrueTorque, Twin Channel, Water Jet System

Upper GI and Lower GI



Diagnostic and standard therapeutics

Processors

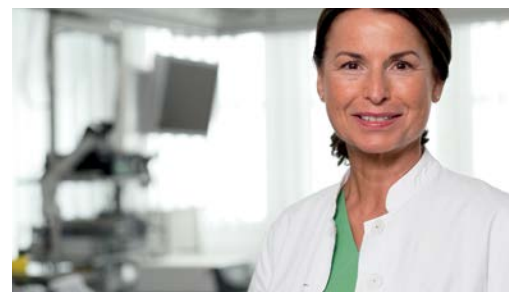
EPK-3000 DEFINA Video Processor with i-scan

Light source	150W Xenon
Advanced imaging modalities	Digital image enhancement (i-scan SE, CE, TE)
Digital output	DVI-D
Analog output	RGB, Y/C, composite
User Interface	Control panel, keyboard
Digital Zoom	yes
Dimensions (W x H x D)	350 x 180 x 485 mm

EPK-i5000 Video Processor with i-scan

Digital output	SXGA (native resolution) via DVI-D
Analogue output	RGB, Y/C, composite, VGA
i-scan virtual chromoendoscopy	Quick access via i-scan keys 1, 2, 3
Light source	300W Xenon
Dimensions (W x H x D / weight)	400 x 205 x 485 mm / 22.0 kg

Upper GI and Lower GI



Diagnostic and standard therapeutics | IMAGINA System

Upper GI Endoscope IMAGINA

Product	Insertion Tube ø (mm)	Min. Instrument Channel ø (mm)	Working Length (mm)	Tip angulation up/down (°)	Tip angulation right/left (°)	Field of view (°)	Remarks
EG29-i10c IMAGINA Video Gastroscope	9.8	3.2	1050	210/120	120/120	140	HD+ image, LED, Water Jet System

Lower GI Endoscopes IMAGINA

Product	Insertion Tube ø (mm)	Min. Instrument Channel ø (mm)	Working Length (mm)	Tip angulation up/down (°)	Tip angulation right/left (°)	Field of view (°)	Remarks
EC34-i10cM IMAGINA Video Colonoscope EC34-i10cF IMAGINA Video Colonoscope EC34-i10cL IMAGINA Video Colonoscope	11.6	3.8	1300 1500 1700	180/180	160/160	140	HD+ image, i-FLEX and TrueTorque, Water Jet System, LED
EC38-i10cF2 IMAGINA Video Colonoscope	13.2	3.8	1500	180/180	160/160	140	HD+ image, i-FLEX and TrueTorque, Water Jet System, LED, increased rigidity
EC38-i10cM IMAGINA Video Colonoscope EC38-i10cF IMAGINA Video Colonoscope EC38-i10cL IMAGINA Video Colonoscope	13.2	3.8	1300 1500 1700	180/180	160/160	140	HD+ image, i-FLEX and TrueTorque, Water Jet System, LED

IMAGINA G-EYE® Endoscopes

Product	Insertion Tube ø (mm)	Min. Instrument Channel ø (mm)	Working Length (mm)	Tip angulation up/down (°)	Tip angulation right/left (°)	Field of view (°)	Remarks
G-EYE34-i10cF Video Endoscope G-EYE34-i10cL Video Endoscope	11.6	3.8	1500 1700	180/180	160/160	140	HD+ image, i-FLEX and TrueTorque, Water Jet System, LED, permanently integrated reusable balloon
G-EYE38-i10cF2 Video Endoscope	13.2	3.8	1500	180/180	160/160	140	HD+ image, i-FLEX and TrueTorque, Water Jet System, LED, permanently integrated reusable balloon
G-EYE38-i10cM Video Endoscope G-EYE38-i10cF Video Endoscope G-EYE38-i10cL Video Endoscope	13.2	3.8	1300 1500 1700	180/180	160/160	140	HD+ image, i-FLEX and TrueTorque, Water Jet System, LED, permanently integrated reusable balloon

Processor IMAGINA

Product	Light Source	Advanced imaging modalities	Video Output	Digital Input	Printer-specific output	User Interface	Digital Zoom	Dimensions (W x H x D / weight)
EPK-i5500c IMAGINA Video Processor with i-scan and LED Technology	LED (build into the endoscope, not into the processor)	Digital image enhancement (SE, CE, TE)	DVI, VGA	DVI	Y/C	7 inch customizable, smartphone-like touchscreen	Up to x 2.0	400 x 172.6 x 471mm / 13kg

Upper GI and Lower GI



Basic diagnosis and treatment

Upper GI Endoscopes

Product	Insertion Tube ø (mm)	Min. Instrument Channel ø (mm)	Working Length (mm)	Tip angulation up/down (°)	Tip angulation right/left (°)	Field of view (°)	Remarks
EG-2490K Gastroscope 90K	8.0	2.4	1050	210/120	120/120	140	
EG-2790K Gastroscope 90K	9.0	2.8	1050	210/120	120/120	140	
EG-2990K Gastroscope 90K	9.8	2.8	1050	210/120	120/120	140	
EG-3890TK Gastroscope 90K	12.8	3.8/2.8	1050	180/120	120/120	140	

Lower GI Endoscopes

Product	Insertion Tube ø (mm)	Min. Instrument Channel ø (mm)	Working Length (mm)	Tip angulation up/down (°)	Tip angulation right/left (°)	Field of view (°)	Remarks
EC-3490FK Colonoscope 90K	11.6	3.8	1500	180/180	160/160	140	
EC-3490LK Colonoscope 90K	11.6	3.8	1700	180/180	160/160	140	
EC-3890FK2 Colonoscope 90K	13.2	4.2	1500	180/180	160/160	140	Insertion tube with increased rigidity in comparison with standard equipment
EC-3890FK Colonoscope 90K	13.2	4.2	1500	180/180	160/160	140	
EC-3890LK Colonoscope 90K	13.2	4.2	1700	180/180	160/160	140	
EC-3890TLK Colonoscope 90K	13.2	3.8/2.8	1700	180/180	160/160	140	

Upper GI and Lower GI



Basic diagnosis and treatment | Versa System*

Upper GI Endoscopes

Product	Insertion Tube ø (mm)	Min. Instrument Channel ø (mm)	Working Length (mm)	Tip angulation up/down (°)	Tip angulation right/left (°)	Field of view (°)	Remarks
EG27-V10c VERSA Video Gastroscope	9	2.8	1050	210/90	100/100	140	HD, LED
EG29-V10c VERSA Video Gastroscope	9.6						

Lower GI Endoscopes

Product	Insertion Tube ø (mm)	Min. Instrument Channel ø (mm)	Working Length (mm)	Tip angulation up/down (°)	Tip angulation right/left (°)	Field of view (°)	Remarks
EC38-V10cL VERSA Video Colonoscope	12.8	3.7	1650	180/180	160/160	140	HD, LED
EC38-V10cM VERSA Video Colonoscope			1300				

Processor

EPK-V1500c VERSA Video Processor with HD and LED Technology

Video output	Y/C, DVI, RGB, SYNC, AV
Imaging enhancement	E-stressed mucosal morphology or profile for increasing the sharpness of endoscopic images. Profile enhance level has four gears to choose from.
Light source	LED
Dimensions (W x H x D / weight)	452 x 167 x 456 mm / 11.5 kg
Color tone adjustment	"R", "B" adjustment: ±25 steps
Brightness adjustment	"Y" adjustment: ±25 steps
Freeze, save, review	Endoscopic images can be frozen and saved, so that images can be reviewed
Gain control	(OFF, 1, 2 and 3)
Metering mode	Average; Peak
White balance adjustment	Press the white balance switch to perform the white balance adjustment.
Voltage	100 - 240VAC
Power frequency	50Hz/60Hz
Air flow	2 steps (H/L)

* available in selected countries only

Upper GI and Lower GI



Peripherals and Accessories

Recommended Leak Testers

Product	Remarks
SHA-P6 Automatic Leakage Tester	
Manual Leakage Tester for VERSA*	only for VERSA system

Recommended Trolleys

Product	Remarks
Classic Cart with Insulation Transformer	
PT-V10c - Endoscopic Trolley	
Uni-Cart	
Uni Cart DISCOVERY	

Recommended Monitors

Product	Remarks
21" EndoVue Monitor	
24" EndoVue Monitor	
27" Radiance Ultra Monitor	
32" EndoVue Monitor	
PENTAX ZeroWire G2 Pair, for 32" Monitor	
PENTAX ZeroWire G2 Pair, for 27" Monitor	

Pumps

Product	Remarks
EGA-500 - irrigation pump	
EGA-501 - CO ₂ insufflator	
Senator30 - suction pump	

Electrosurgery

Main Units

Product	Remarks
ARC 400 Electrosurgical Unit	
ARC PLUS Unit for ARC 400	
ENDO ARC Electrosurgical Unit	
ENDO PLUS Unit for ENDO ARC	
Fuego Basic Trolley II	

Basic Accessories for ENDO ARC

Product	Remarks
Monopolar Cable Endoscopy 2,8 mm Socket 4 mm	
Single Use Cable Return Plate 4,5 m	
Split Neutral Electrode, 90 cm ² , EASY (100 pieces)	

Basic Accessories for ARC 400

Product	Remarks
Monopolar Cable Endoscopy 2,8 mm Socket Comfort	
Single Use Cable Return Plate 4,5 m	
Split Neutral Electrode, 110 cm ² , EASY (100 pieces)	

Consumables for ENDO PLUS and ARC PLUS

Product	Remarks
Disposable Filters (50 pieces)	
Reusable Cable for Flexible Argon Probe Comfort 2,5 m	
Disposable Flexible Argon Probe, Ø 2,3 mm, 2,2 m (10 pieces)	
Disposable Flexible Argon Probe, Ø 3,2 mm, 2,2 m (10 pieces)	
Disposable Flexible Argon Probe, Ø 1,5 mm, 3 m (10 pieces)	
Disposable Flexible Argon Probe, Ø 2,3 mm, 3 m (10 pieces)	
Disposable Flexible Argon Probe, 90°, Ø 2,3 mm, 2,2 m (10 pieces)	

Biliopancreatic



Advanced diagnosis and treatment

ERCP Endoscopes

Product	Insertion Tube ø (mm)	Min. Instrument Channel ø (mm)	Working Length (mm)	Tip angulation up/down (°)	Tip angulation right/left (°)	Field of view (°)	Remarks
ED32-i10 Video DEC™ Duodenoscope	10.8	3.2	1250	120/90	105/90	105 (retro 15)	HD, DEC™ (Disposable Elevator Cap)
ED34-i10T2 Video DEC™ Duodenoscope	11.6	4.2	1250	120/90	105/90	100 (retro 10)	HD, DEC™ (Disposable Elevator Cap)
ED34-i10T Video Duodenoscope	11.6	4.2	1250	120/90	105/90	100 (retro 10)	HD, detachable distal-end cap

Endoscopic Ultrasound (EUS) Endoscopes

Product	Insertion Tube ø (mm)	Min. Instrument Channel ø (mm)	Working Length (mm)	Tip angulation up/down (°)	Tip angulation right/left (°)	Field of view (°)	Remarks
EG34-J10U Ultrasound Video Gastroscope	11.6	2.8	1250	160/130	120/120	120	Convex, RTE**, dCHI***, Frequency (MHz) 5 –13, Scan angle (°) 150
EG38-J10UT Ultrasound Video Gastroscope	12.8	4.0	1250	160/130	120/120	120	Convex, RTE**, dCHI***, Frequency (MHz) 5 –13, Scan angle (°) 150
EG36-J10UR Ultrasound Video Gastroscope	12.1	2.4	1250	150/70	70/70	140	Radial, RTE**, dCHI*** Frequency (MHz) 5 –13, Scan angle (°) 360

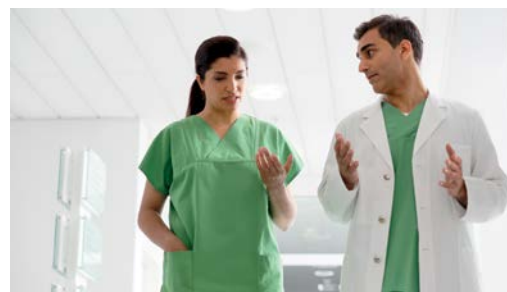
Processor

EPK-i7010 OPTIVISTA plus Video Processor with i-scan and i-scan OE

Light source	300W Xenon
Advanced imaging modalities	Digital image enhancement (i-scan SE, CE, TE) Optical image enhancement (i-scan OE)
Digital output	HD-SDI, DVI
Analog output	RGB, S-Video, composite video
User interface	Touch screen, TwinMode
Digital zoom	yes
Dimensions (W x H x D)	400 x 205 x 520 mm

**Real-time Tissue Elastography
***Dynamic Contrast Harmonic Imaging

Biliopancreatic



Diagnostic and standard therapeutics

ERCP Endoscopes

Product	Insertion Tube ø (mm)	Min. Instrument Channel ø (mm)	Working Length (mm)	Tip angulation up/down (°)	Tip angulation right/left (°)	Field of view (°)	Remarks
ED34-i10T2 Video DEC™ Duodenoscope	11.6	4.2	1250	120/90	105/90	100 (retro 10)	HD+, DEC™ (Disposable Elevator Cap)
ED34-i10T Video Duodenoscope	11.6	4.2	1250	120/90	105/90	100 (retro 10)	HD+, detachable distal-end cap

Endoscopic Ultrasound (EUS) Endoscopes

Product	Insertion Tube ø (mm)	Min. Instrument Channel ø (mm)	Working Length (mm)	Tip angulation up/down (°)	Tip angulation right/left (°)	Field of view (°)	Remarks
EG34-J10U Ultrasound Video Gastroscope	11.6	2.8	1250	160/130	120/120	120	Convex, RTE*, dCHI**, Frequency (MHz) 5 –13, Scan angle (°) 150
EG38-J10UT Ultrasound Video Gastroscope	12.8	4.0	1250	160/130	120/120	120	Convex, RTE*, dCHI**, Frequency (MHz) 5 –13, Scan angle (°) 150
EG36-J10UR Ultrasound Video Gastroscope	12.1	2.4	1250	150/70	70/70	140	Radial, RTE*, dCHI**, Frequency (MHz) 5 –13, Scan angle (°) 360

Processors

EPK-i7010 OPTIVISTA plus Video Processor with i-scan and i-scan OE	
Light source	300W Xenon
Advanced imaging modalities	Digital image enhancement (i-scan SE, CE, TE) Optical image enhancement (i-scan OE)
Video output	HD-SDI, DVI
Analog output	RGB, S-Video, composite video
User interface	Touch screen, TwinMode
Digital zoom	yes
Dimensions (W x H x D)	400 x 205 x 520 mm

EPK-i5000	
Digital output	SXGA (native resolution) via DVI-D
Analog output	RGB, Y/C, composite, VGA
User interface	Control panel, keyboard
i-scan virtual chromoendoscopy	Quick access via i-scan keys 1, 2, 3
Light source	300W Xenon
Dimensions (W x H x D / weight)	400 x 205 x 485 mm / 22.0 kg

*Real-time Tissue Elastography
**Dynamic Contrast Harmonic Imaging

Biliopancreatic



Basic diagnosis and treatment

ERCP Endoscope

Product	Insertion Tube ø (mm)	Min. Instrument Channel ø (mm)	Working Length (mm)	Tip angulation up/down (°)	Tip angulation right/left (°)	Field of view (°)	Remarks
ED34-i10T Video Duodenoscope	11.6	4.2	1250	120/90	105/90	100 (retro 10)	HD, detachable distal-end cap

Endoscopic Ultrasound (EUS) Endoscopes

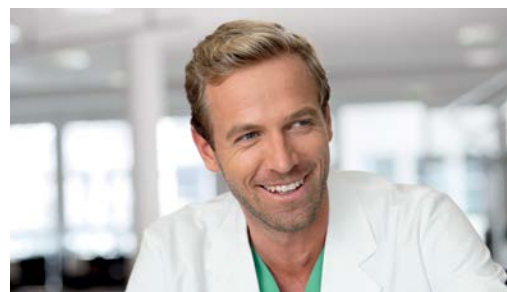
Product	Insertion Tube ø (mm)	Min. Instrument Channel ø (mm)	Working Length (mm)	Tip angulation up/down (°)	Tip angulation right/left (°)	Field of view (°)	Remarks
EG34-J10U Ultrasound Video Gastroscope	11.6	2.8	1250	160/130	120/120	120	Convex, RTE*, dCHI**, Frequency (MHz) 5 –13, Scan angle (°) 150
EG38-J10UT Ultrasound Video Gastroscope	12.8	4.0	1250	160/130	120/120	120	Convex, RTE*, dCHI**, Frequency (MHz) 5 –13, Scan angle (°) 150
EG36-J10UR Ultrasound Video Gastroscope	12.1	2.4	1250	150/70	70/70	140	Radial, RTE*, dCHI**, Frequency (MHz) 5 –13, Scan angle (°) 360

Processor

EPK-i5000	
Digital output	SXGA (native resolution) via DVI-D
Analog output	RGB, Y/C, composite, VGA
User interface	Control panel, keyboard
i-scan virtual chromoendoscopy	Quick access via i-scan keys 1, 2, 3
Light source	300W Xenon
Dimensions (W x H x D / weight)	400 x 205 x 485 mm / 22.0 kg

*Real-time Tissue Elastography
**Dynamic Contrast Harmonic Imaging

Biliopancreatic



Peripherals and Accessories

Recommended Leak Tester

Product	Remarks
SHA-P6 Automatic Leakage Tester	

Recommended Trolleys

Product	Remarks
Classic Cart with Insulation Transformer	

Recommended Monitor

Product	Remarks
27" Radiance Ultra Monitor NDS	

Accessories

Product	Remarks
OE-A65 Sterile Disposable Elevator Cap (DEC™)	DEC™ (Disposable Elevator Cap). To be used with ED32-i10 Video DEC™ Duodenoscope
OE-A63 Sterile Disposable Elevator Cap (DEC™)	To be used with ED34-i10T2 Video DEC™ Duodenoscope
OE-A55 Detachable Distal-End Cap	To be used with ED34-i10T Video Duodenoscope

Pumps

Product	Remarks
EGA-500 - irrigation pump	
EGA-501 - CO ₂ insufflator	
Senator30 - suction pump	

Electrosurgery

Main Units

Product	Remarks
ARC PLUS Unit for ARC 400	
ENDO ARC Electrosurgical Unit	
ENDO PLUS Unit for ENDO ARC	
Fuego Basic Trolley II	

Basic Accessories for ENDO ARC

Product	Remarks
Monopolar Cable Endoscopy 2,8 mm Socket 4 mm	
Single Use Cable Return Plate 4,5 m	
Split Neutral Electrode, 90 cm ² , EASY (100 pieces)	

Basic Accessories for ARC 400

Product	Remarks
Monopolar Cable Endoscopy 2,8 mm Socket Comfort	
Single Use Cable Return Plate 4,5 m	
Split Neutral Electrode, 110 cm ² , EASY (100 pieces)	

Consumables for ENDO PLUS and ARC PLUS

Product	Remarks
Set of Sterile Filters (50 pieces)	
Cable for Flexible Argon Probe Comfort 2,5 m (Reusable)	
Flexible Argon Probe, Ø 2,3 mm, 2,2 m (10 pieces)	
Flexible Argon Probe, Ø 3,2 mm, 2,2 m (10 pieces)	
Flexible Argon Probe, Ø 1,5 mm, 3 m (10 pieces)	
Flexible Argon Probe, Ø 2,3 mm, 3 m (10 pieces)	
Flexible Argon Probe, 90°, Ø 2,3 mm, 2,2 m (10 pieces)	



Advanced diagnosis and treatment

Endoscopes

Product	Insertion Tube ø (mm)	Min. Instrument Channel ø (mm)	Working Length (mm)	Tip angulation up/down (°)	Field of view (°)	Remarks
EB11-J10 Video Bronchoscope	3.9	1.2	600	210/130	120	HD, STERRAD® compatible
EB15-J10 Video Bronchoscope	5.2	2.0	600	210/130	120	HD, STERRAD® compatible
EB19-J10 Video Bronchoscope	6.4	2.8	600	180/130	120	HD, STERRAD® compatible
EB19-J10U Ultrasound Video Bronchoscope	6.3	2.2	600	120/90	100	Convex, Frequency [MHz] 5-13**, Scan angle 75°, RTE*

Processors

EPK-i7010 OPTIVISTA plus Video Processor with i-scan and i-scan OE	
Light source	300W Xenon
Advanced imaging modalities	Digital image enhancement (i-scan SE, CE, TE) Optical image enhancement (i-scan OE)
Digital output	HD-SDI, DVI
Analog outputs	RGB, S-Video, composite video
User interface	Touch screen, TwinMode
Digital zoom	yes
Dimensions (W x H x D)	400 x 205 x 520 mm

EPK-3000 DEFINA Video Processor with i-scan	
Light source	150W Xenon
Advanced imaging modalities	Digital image enhancement (i-scan SE, CE, TE)
Digital output	DVI-D
Analog outputs	RGB, Y/C, composite
User Interface	Control panel, keyboard
Digital Zoom	yes
Dimensions (W x H x D)	350 x 180 x 485 mm

*Real-time Tissue Elastography

**For details on frequency, refer to the instructions for use provided with the ultrasound scanning unit

Pulmonology



Diagnostic and standard therapeutics

Endoscopes

Product	Insertion Tube ø (mm)	Min. Instrument Channel ø (mm)	Working Length (mm)	Tip angulation up/down (°)	Field of view (°)	Remarks
EB15-J10 Video Bronchoscope	5.2	2.0	600	210/130	120	HD, STERRAD® compatible
EB19-J10U Ultrasound Video Bronchoscope	6.3	2.2	600	120/90	100	Convex, Frequency [MHz] 5-13*, Scan angle [°] 75, RTE*
EB19-J10 Video Bronchoscope	6.4	2.8	600	180/130	120	HD, STERRAD® compatible

Processor

EPK-3000 DEFINA Video Processor with i-scan

Light source	150W Xenon
Advanced imaging modalities	Digital image enhancement (i-scan SE, CE, TE)
Digital output	DVI-D
Analog output	RGB, Y/C, composite
User Interface	Control panel, keyboard
Digital Zoom	yes
Dimensions (W x H x D)	350 x 180 x 485 mm

*Real-time Tissue Elastography

Pulmonology



Basic diagnosis and treatment

Endoscopes

Product	Insertion Tube ø (mm)	Min. Instrument Channel ø (mm)	Working Length (mm)	Tip angulation up/down (°)	Field of view (°)	Remarks
FB-8V Fiber Bronchoscope	2.8	1.15	600	180/130	100	Suction Control Valve
FB-15V Fiber Bronchoscope	4.9	2.1	600	180/130	120	Suction Control Valve
FB-18V Fiber Bronchoscope	6.0	2.7	600	180/130	120	Suction Control Valve
FB-19TV Fiber Bronchoscope	6.2	3.0	600	180/130	120	Suction Control Valve
FB-15RBS Portable Fiber Bronchoscope	4.9	1.95	600	180/130	100	Portable, LSV Solutions (Light Source Versatility), Plastic Suction Control Valve
FB-18RBS Portable Fiber Bronchoscope	6.0	2.55	600	180/90	100	Portable, LSV Solutions (Light Source Versatility), Plastic Suction Control Valve

Light Source

BS-LL1 LED Light Source Battery-type - for BS series only

Dimensions	32 mm (W) × 32 mm (H) × 88 mm (D)
Weight	0.11 kg
Power supply	Lithium Battery DC3V
Power consumption [W]	250 mW max.
Lamp	White LED
Pressure [hPa]	700-1060

Endoscopic camera

S181P USB Camera

Sensor	CCD 1/4" high sensitivity
Resolution of the sensor	(725 x 582) PAL / (768 x 494) NTSC
Weight [g]	210
Cable length	3m, Ø 5mm
iCe Technology, Electronic anti-moiré filter for flexible fiberscope, 2 x programmable buttons, 1 x USB 2.0 output	

Pulmonology



Peripherals and Accessories

Recommended Leak Tester

Product	Remarks
SHA-P6 Automatic Leakage Tester	

Recommended Trolley

Product	Remarks
Classic Cart with Insulation Transformer	

Recommended Monitor

Product	Remarks
27" Radiance Ultra Monitor NDS	

Accessories

Product	Remarks
OF-B205 Single Use Suction Control Valves (10 pieces)	To be used with EB11-J10, EB15-J10, EB19-J10 and EB19-J10U

Intubation



Advanced diagnosis and treatment

Endoscope

Product	Insertion Tube ø (mm)	Min. Instrument Channel ø (mm)	Working Length (mm)	Tip angulation up/down (°)	Field of view (°)	Remarks
EB11-J10 Video Bronchoscope	3.9	1.2	600	210/130	120	HD, STERRAD® compatible
EB15-J10 Video Bronchoscope	5.2	2.0	600	210/130	120	HD, STERRAD® compatible
EB19-J10 Video Bronchoscope	6.4	2.8	600	180/130	120	HD, STERRAD® compatible

Processor

EPK-3000 DEFINA Video Processor with i-scan

Light source	150W Xenon
Advanced imaging modalities	Digital image enhancement (i-scan SE, CE, TE)
Digital output	DVI-D
Analog output	RGB, Y/C, composite
User Interface	Control panel, keyboard
Digital Zoom	yes
Dimensions (W x H x D)	350 x 180 x 485 mm

Intubation



Basic diagnosis and treatment

Endoscopes

Product	Insertion Tube ø (mm)	Min. Instrument Channel ø (mm)	Working Length (mm)	Tip angulation up/down (°)	Field of view (°)	Remarks
FI-7RBS Portable Fiber Intubation Scope	2.4	-	600	130/130	95	portable, LSV (Light Source Versatility) Solution
FI-9RBS Portable Fiber Intubation Scope	3.1	1.15	600	130/130	90	portable, LSV (Light Source Versatility) Solution, Suction Control Valve
FI-10RBS Portable Fiber Intubation Scope	3.5	1.31	600	130/130	90	portable, LSV (Light Source Versatility) Solution, Suction Control Valve
FI-13RBS Portable Fiber Intubation Scope	4.2	1.72	600	160/130	95	portable, LSV (Light Source Versatility) Solution, Suction Control Valve
FI-16RBS Portable Fiber Intubation Scope	5.2	2.55	600	160/130	95	portable, LSV (Light Source Versatility) Solution, Suction Control Valve

Light Source

BS-LL1 LED Light Source Battery-type - for BS series only

Dimensions	32 mm (W) × 32 mm (H) × 88 mm (D)
Weight	0.11 kg
Power supply	Lithium Battery DC3V
Power consumption	250 mW max.
Lamp	White LED
Pressure [hPa]	700-1060

Endoscopic camera

S181P USB Camera

Sensor	CCD 1/4" high sensitivity
Resolution of the sensor	(725 x 582) PAL / (768 x 494) NTSC
Weight [g]	210
Cable length	3m, Ø 5mm
iCe Technology, Electronic anti-moiré filter for flexible fiberscope, 2 x programmable buttons, 1 x USB 2.0 output	

Intubation



Peripherals and Accessories

Recommended Leak Tester

Product	Remarks
SHA-P6 Automatic Leakage Tester	

Recommended Trolley

Classic Cart with Insulation Transformer	
Weight [kg]	70
Dimensions - H x W x D [mm]	1309 x 614 x 625
Cart load capacity	150

Recommended Monitor

Product	Remarks
27" Radiance Ultra Monitor	



Advanced diagnosis and treatment

Endoscopes

Product	Insertion Tube ø (mm)	Min. Instrument Channel ø (mm)	Working Length (mm)	Tip angulation up/down (°)	Field of view (°)	Remarks
VNL8-J10 Video Naso-Pharyngo-Laryngoscope	2.9	-	300	130/130	80	HD, STERRAD® compatible
VNL11-J10 Video Naso-Pharyngo-Laryngoscope	3.6	-	300	130/130	80	HD, STERRAD® compatible
VNL15-J10 Video Naso-Pharyngo-Laryngoscope	4.9	2.0	300	130/130	80	HD, STERRAD® compatible

Processor

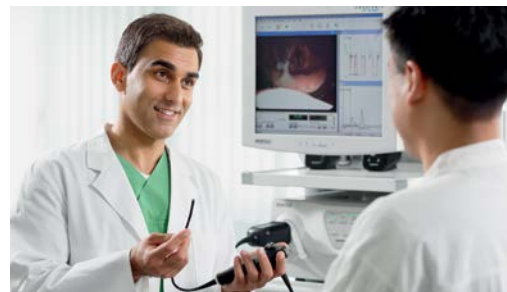
EPK-i7010 OPTIMISTA plus Video Processor with i-scan and i-scan OE	
Light source	300W Xenon
Advanced imaging modalities	Digital image enhancement (i-scan SE, CE, TE) Optical image enhancement (i-scan OE)
Digital output	HD-SDI, DVI
Analog output	RGB, S-Video, composite video
User interface	Touch screen, TwinMode
Digital zoom	yes
Dimensions (W x H x D)	400 x 205 x 520 mm

Light Source

Product	Remarks
Laryngeal Strobe	

Digital Capturing Module

KAY9372HD Digital Capture	
Product Name	9372HD Digital Capture
Processor and Memory	Intel® Core™ i7 CPU 2.6 GHz; 16GB system RAM
Storage	Four removable hard drives (1 TB each); internal hard drive (1 TB)
Operating System	Microsoft® Windows 10 and Microsoft® Word for reports
Additional Hardware	DVD+RW drive with CD-R/RW writing capability
Connectivity	DICOM (option)
Software	Video and audio capture, processing, and playback; patient examination database management features; printing
Fluoroscopy	Optional scan converter allows conversion of various and specialized input video formats to standard formats for recording and processing
Dimensions (W x H x D / weight)	211 x 444 x 495mm / 13.7kg



Diagnostic and standard therapeutics

Endoscopes

Product	Insertion Tube ø (mm)	Min. Instrument Channel ø (mm)	Working Length (mm)	Tip angulation up/down (°)	Field of view (°)	Remarks
VNL8-J10 HD Video Naso-Pharyngo-Laryngoscope	2.9	-	300	130/130	80	HD, STERRAD® compatible
VNL11-J10 HD Video Naso-Pharyngo-Laryngoscope	3.6	-	300	130/130	80	HD, STERRAD® compatible
VNL15-J10 HD Video Naso-Pharyngo-Laryngoscope	4.9	2.0	300	130/130	80	HD, STERRAD® compatible
VNL9-CP VIVIDEO Video Naso-Pharyngo- Laryngoscope	3.3	-	300	120/120	90	Only compatible with CP-1000 Video processor

Processors

EPK-3000 DEFINA Video Processor with i-scan

Light source	150W Xenon
Advanced imaging modalities	Digital image enhancement (i-scan SE, CE, TE)
Digital output	DVI-D
Analog output	RGB, Y/C, composite
User Interface	Control panel, keyboard
Digital Zoom	yes
Dimensions (W x H x D)	350 x 180 x 485 mm

CP-1000 VIVIDEO Video Processor

Video output	DVI-D, VGA
Image Format	SXGA [1280 x 1024@60p], XGA [1024 x 768@60p], 720p [1280 x 720@60p] HDTV, 1080p [1920 x 1080@30p] HDTV
Image Recording	Integrated function, external USB storage device
Dimensions (W x H x D)	75 x 340 x 380 mm

Digital Capturing Module

KAY9372HD Digital Capture

Product Name	9372HD Digital Capture
Processor and Memory	Intel® Core™ i7 CPU 2.6 GHz; 16GB system RAM
Storage	Four removable hard drives (1 TB each); internal hard drive (1 TB)
Operating System	Microsoft® Windows 10 and Microsoft® Word for reports
Additional Hardware	DVD+RW drive with CD-R/RW writing capability
Connectivity	DICOM (option)
Software	Video and audio capture, processing, and playback; patient examination database management features; printing
Fluoroscopy	Optional scan converter allows conversion of various and specialized input video formats to standard formats for recording and processing
Dimensions (W x H x D / weight)	211 x 444 x 495mm / 13.7kg

Light Source

Product	Remarks
Laryngeal Strobe	



Basic diagnosis and treatment

Endoscopes

Product	Insertion Tube ø (mm)	Min. Instrument Channel ø (mm)	Working Length (mm)	Tip angulation up/down (°)	Field of view (°)	Remarks
FNL-7RP3 Fiber Naso-Pharyngo-Laryngoscope	2.4	-	300	130/130	75	
FNL-10RP3 Fiber Naso-Pharyngo-Laryngoscope	3.5	-	300	130/130	75	
FNL-10RBS Fiber Naso-Pharyngo-Laryngoscope	3.5	-	300	130/130	85	portable

Light Source

Product	Remarks
BS-LL1 LED Light Source Battery-type	
Laryngeal Strobe	

Endoscopic Camera

S181P USB Camera	
Sensor	CCD 1/4" high sensitivity
Resolution of the sensor	(725 x 582) PAL / (768 x 494) NTSC
Weight	210g
Cable length	3m, Ø 5mm
iCe Technology, Electronic anti-moiré filter for flexible fiberscope, 2 x programmable buttons, 1 x USB 2.0 output	



Peripherals and Accessories

Recommended Leak Tester

Product	Remarks
SHA-P6 Automatic Leakage Tester	

Recommended Trolleys

Product	Remarks
Cart for VIVIDEO with Insulation Transformer	
PENTAX SVS Trolley	

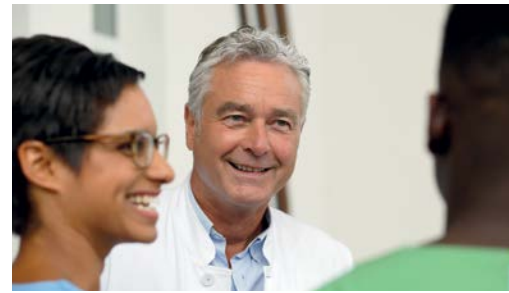
Recommended Monitors

Product	Remarks
21" EndoVue Monitor	
24" EndoVue Monitor	
27" Radiance Ultra Monitor NDS	

Accessories

Product	Remarks
OF-B205 Single Use Suction Control Valves (10 pieces)	To be used with VNL15-J10

Urology



Diagnostic and standard therapeutics

Endoscope

Product	Insertion Tube ø (mm)	Min. Instrument Channel ø (mm)	Working Length (mm)	Tip angulation up/down (°)	Field of view (°)	Remarks
ECY-1575K Video Cystoscope	5.2	2	400	210/130	120	STERRAD® compatible

Processor

EPK-3000 DEFINA Video Processor with i-scan

Light source	150W Xenon
Advanced imaging modalities	Digital image enhancement (i-scan SE, CE, TE)
Video output	DVI-D
Analog output	RGB, Y/C, composite
User Interface	Control panel, keyboard
Digital Zoom	yes
Dimensions (W x H x D)	350 x 180 x 485 mm

Urology



Basic diagnosis and treatment

Endoscope

Product	Insertion Tube ø (mm)	Min. Instrument Channel ø (mm)	Working Length (mm)	Tip angulation up/down (°)	Field of view (°)	Remarks
FCY-15RBS Fiber Cystoscope	4.9	2.1	400	220/120	125 (A), 83 (W)	portable

Light Source

Product	Remarks
BS-LL1 LED Light Source Battery-type	
Laryngeal Strobe	

Urology



Peripherals and Accessories

Recommended Leak Tester

Product	Remarks
SHA-P6 Automatic Leakage Tester	

Recommended Trolley

Product	Remarks
ITD Classic Trolley With Insulation Transformer	

Recommended Monitors

Product	Remarks
PENTAX ZeroWire G2 Pair, for 27" Monitor	
27" Radiance Ultra Monitor	

Endoscope Drying and Storage



Endoscope Drying and Storage

PlasmaTYPHOON

Characteristic / Parameter	Value
Reference	Typhoon V2TD
Power supply / electrical network	220-240V
Frequency	50 Hz
Dimensions (length / width / height)	250 / 250 / 250 mm (9.8 / 9.8 / 9.8 in)
Pressure regulator - delivery pressure	0 to 5 bar (72.52 psi)
Pressure of the medical air at the gas inlet	3 bar (43.51 psi)
Minimal gas flowrate	60 l/min
Weight	7.5 kg

PlasmaTYPHOON* Drying Cycles

Endoscope type	Drying cycle time
Gastroscope, duodenoscope, enteroscope, colonoscope	2 min 30 s
Bronchoscope, ultrasound bronchoscope (EBUS), nasoscope, ureteroscope, cystoscope (channel diam. > 1.5mm)	1 min 30 s
Pediatric bronchoscope, nasoscope, ureteroscope, cystoscope (channel diam. <1.5mm)	1 min
Gastrointestinal ultrasound endoscope (EUS)	5 min

PlasmaBAG**

Description	Reference	Characteristics
Standard PlasmaBAG	PBag	size: 60cm x 50cm, packaging: 400 units
XL PlasmaBAG	PBagXL	size: 70cm x 64cm, packaging: 250 units
XXL PlasmaBAG	PBagXXL	size: 84cm x 60cm, packaging: 300 units

PlasmaBAG is a single-use bag specifically designed for endoscope storage using the PlasmaTYPHOON system. PlasmaBAG must be used in combination with PlasmaTYPHOON.

*Compatible with Olympus, Storz, Wolf and Fujifilm endoscopes. Compatible also with cystoscopes.

** For Urology endoscopes storage in PlasmaBAG, please check local regulations regarding need to reprocess after storage.

Product Compatibility Chart

Discipline	Market/Application	Endoscope Series	Processors / Lightsources									PlasmaTYPHOON and PlasmaBAG
			EPK-i7010 OPTIVISTA plus	EPK-3000 DEFINA	EPK-i5000	EPK-i5500c IMAGINA	EPK-V1500c VERSA	CP-1000 VIVIDEO Video Processor	KAY9372HD Digital Capture	BS-LL1 LED Light Source Battery-type	USB camera head	
Upper GI and Lower GI	Advanced diagnosis and treatment	i10	X		X							X
		K10	X	X	X							X
		90i	X		X							X
		90K	X	X	X							X
	Diagnostic and standard therapeutics	i10c				X						X
Basic diagnosis and treatment	V10c					X					X	
Biliopancreatic	Advanced diagnosis and treatment	i10, J10U	X									X
	Diagnostic and standard therapeutics	i10, J10U	X	X (J10U)	X							X
	Basic diagnosis and treatment	i10, J10U	X	X (J10U)	X							X
Pulmonology	Advanced diagnosis and treatment	i10, J10, J10U	X	X (J10, J10U)								X
	Diagnostic and standard therapeutics	J10, J10U, 70K	X	X								X
	Basic diagnosis and treatment	V, RBS								X (RBS-series)	X (V-series) X (RBS-series)	X
Intubation	Advanced diagnosis and treatment	70K		X								X
	Basic diagnosis and treatment	RBS								X	X	X
ENT	Advanced diagnosis and treatment	J10	X	X								X
	Diagnostic and standard therapeutics	J10, CP	J10	J10				CP				X
	Basic diagnosis and treatment	RP3, RBS		X						RBS	RP3, RBS	X
Urology	Diagnostic and standard therapeutics	75K										X*
	Basic diagnosis and treatment	RBS								X	X	X*

*For storage in PlasmaBAG please check local regulations regarding need to reprocess after storage in PlasmaBAG

Device	Manufacturer 	EC REP	Notified Body (if applicable) and Medical Device classes
All Others	HOYA Corporation 6-10-1 Nishi-shinjuku, Shinjuku-ku Tokyo 160-0023, Japan	PENTAX Europe GmbH Julius-Vosseler-Str. 104 22527 Hamburg, Germany	TÜV Süd CE0123 Medical Device classes I, Is, Ila, and IIb
Digital Capture 9372HD	PENTAX of America, Inc. 3 Paragon Drive, Montvale NJ 07645, USA	PENTAX Europe GmbH Julius-Vosseler-Str. 104 22527 Hamburg, Germany	Medical Device class I
VERSA System	PENTAX-Aohua Medical Technologies Co. Ltd. East of 3rd Floor, Block C, Building 1, No.5 Sherwang Road, Minhang District, 201108 Shanghai, P.R. China	PENTAX Europe GmbH Julius-Vosseler-Str. 104 22527 Hamburg, Germany	TÜV Rheinland CE0197 Medical Device classes I and Ila
G-EYE® System	Smart Medical Systems Ltd. 5 HaNoFar St. Ra'anana 4366404, Israel	MedNet GmbH Borkstraße 10 48163 Münster, Germany	MEDCERT CE0482 Medical Device classes I and Ila
Medical Monitors and PENTAX ZeroWire	NDS Surgical Imaging LLC 5750 Hellyer Avenue San Jose, California 95138, USA	Novanta Europe GmbH Parking 57-59, 85748 Garching, Germany	Medical Device class I
Trolleys	ITD GmbH Sportplatzstraße 3 84381 Johanniskirchen, Germany	—	Medical Device class I
PENTAX Medical USB Camera	SOPRO ZAC Athéla IV, Avenue des Génévriers 13705 La Clotat, Cedex, France	—	Medical Device class I
Endo Stratus™ Endoscopic Irrigation Pump and CO₂ Insufflator	Medivators Inc. 14605 28th Ave N, Minneapolis MN 55447, USA	Cantel Medical (Italy) S.r.l., Vai Laurentina, 169, 00040 Pomezia (RM), Italy	NSAI CE0050 Medical Device class Ila
ARC PLUS, ARC 400, ENDO PLUS, ENDO ARC Units, Basic Accessories and Consumables	BOWA-electronic GmbH & Co. KG Heinrich-Hertz-Strasse 4-10 72810 Gomaringen, Germany	—	TÜV Süd CE0123 Medical Device classes I and IIb
Senator 30 Suction Pump	Ardo medical AG Gewerbestraße 19 6314 Unterägeri, Switzerland	Ardo medical GmbH Argelsrieder Feld 10 82234 Oberpfaffenhofen, Germany	TÜV Süd CE0123 Medical Device class Ila
PlasmaTYPHOON and PlasmaBAG	PLASMABIOTICS SAS 116 Quai de Bezons 95106 Argenteuil Cedex, France	—	Medical Device class I
ENDO PLUS and ARC PLUS filter set	Pall Medical - A Division of Pall International Sarl Avenue de Tivoli 3, CH-1700 Fribourg, Switzerland	Pall Genedisc Technologies 1 Rue du Courtil Centre d'Affaires Cicea - Bat 1 35170 Bruz, France	ECM CE1282 Medical Device class Ila

Distributors

EMEA Headquarters

Germany
PENTAX Europe GmbH
Julius-Vosseler-Straße 104
22527 Hamburg
T +49 40 / 5 61 92 - 0
F +49 40 / 5 60 42 13
info.emea@pentaxmedical.com

Italy
PENTAX Italia S.r.l.
Via Dione Cassio, 15
20138 Milano
T +39 / 02 50 99 58 1
F +39 / 02 50 99 58 60
marketing.lifecare@pentaxitalia.it

Spain
SIMMEDICA – Sistemas Integrales
de Medicina, S.A.
Avenida del Sistema Solar 25
28830 San Fernando de Henares
Madrid
T +34 91 / 301 62 40
F +34 91 / 751 31 15
sim@simmedica.com

United Kingdom
PENTAX U.K. Limited
PENTAX House
Heron Drive, Langley
Slough SL3 8PN
T +44 17 53 / 79 27 33
F +44 17 53 / 79 27 94
medical.uk@pentaxmedical.com

France
PENTAX France Life Care S.A.S.
116 quai de Bezons
B. P. 204
95106 ARGENTEUIL CEDEX
T +33 1 / 3025 7575
F +33 1 / 3025 7445
clients.fr@pentaxmedical.com

Russia
Moscow Representative office
of PENTAX Europe GmbH (Germany)
1-ya Tverskaya-Yamskaya ulitsa, 25,
stroenie 1, 6th floor
125047, Moscow
T +7 495 995 10 91
F +7 495 995 10 91 (fax ext. 234)

Turkey
PENTAX Turkey
Veko Giz Plaza, Meydan Sokak
No:3/43 343396
Maslak – Istanbul
T +90 212 / 705 05 26
F +90 212 / 705 05 00

Netherlands
PENTAX Nederland B.V.
Edisonring 6
6669NB Dodewaard
T +31 88 / 5 30 30 30
F +31 88 / 5 30 30 40
info.nl@pentaxmedical.com

These products must be used only by healthcare professionals. Before usage and for detailed product specifications, please refer to the instructions for use. In the interest of technical process, specifications may change without notice.

Latest update: July 2021

www.pentaxmedical.com

PENTAX
MEDICAL